



INSTALLATION INSTRUCTIONS
 FRAME SKID PLATE
 GYT-1S334-00-AL
 YFM700R RAPTOR 700R



WARNING

Please read and understand these instructions completely before installation to avoid possible injury to yourself, or damage to the accessory or vehicle.

CAUTION:

- This installation should be performed by an authorized Yamaha dealer or a qualified mechanic. Some components require information from the model's service manual for proper installation or adjustment. Be sure to have the service manual on hand, if necessary, before proceeding with the installation.
- Alteration of emission-related components constitutes tampering under Federal and State laws and can lead to substantial fines and penalties if used other than in closed-course competition.
- GYTR engine-related competition parts are intended for closed-course racing applications only.

Dealer:

These instructions contain important information for future reference and *must* be given to the customer.

Warranty Information:

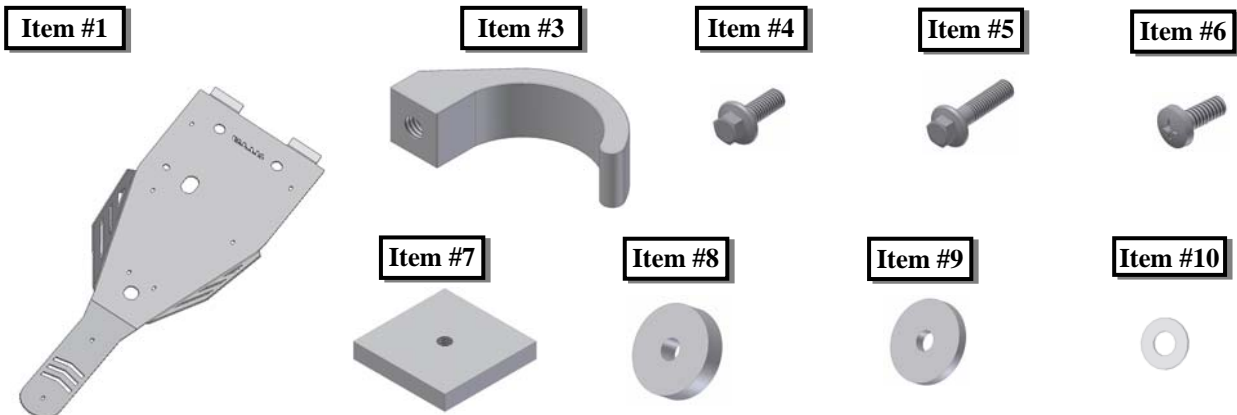
- Genuine Yamaha GYTR components are covered by a 90-day warranty against defects in material or workmanship. Labor for replacement of defective components is not covered. See your Yamaha dealer for a copy of the warranty statement.
- The Yamaha Limited Warranty provided with new Yamaha vehicles has exclusions for certain failures, including those caused by competition or racing use (except YZ and WR motorcycle models) as well as by abnormal strain or abuse. While installation of these GYTR components will not "void" your vehicle's warranty, specific failures adjudged by Yamaha to have resulted from the installation of accessory components or other modifications, or from competition use (except YZ and WR motorcycle models), may not be covered by warranty or Yamaha Extended Service.

1. Kit Contents:

This kit contains the following components, before beginning installation confirm there are no damaged or missing items.

Item #	Part Number	Part Name and Description	Qty
1	GYT-1S334-00-00	Frame Skid Plate, Aluminum	1
2	GYT-1S334-00-99	Hardware Kit	1
3	*	Mounting Hook, Aluminum	3
4	*	M6x1.0P x 16mm, Flange Head Bolt,	2
5	*	M6x1.0P x 20mm, Flange Head Bolt	4
6	*	M6X1X14 Binding Head Screw	2
7	*	M6X1, Frame Skid Nut, Aluminum	1
8	*	6.35 mm Thick Aluminum Spacer	2
9	*	3.5mm Thick, Aluminum Spacer	2
10	*	Nylon Retaining Washer	4

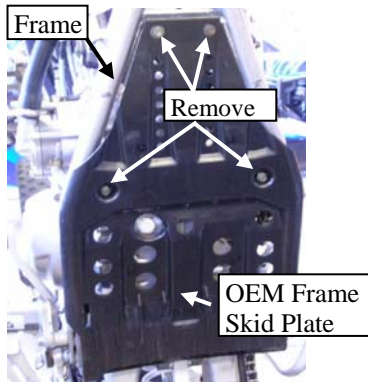
* Part is supplied with the kit only and is not a replacement item.



2. Preparation:

- a) On a level surface turn off gas valve, plug the gas tank vent hose and stand the ATV upright on the rear grab bar. Check to make sure the unit is stable and no fuel is leaking from the gas cap or vent hose before proceeding.

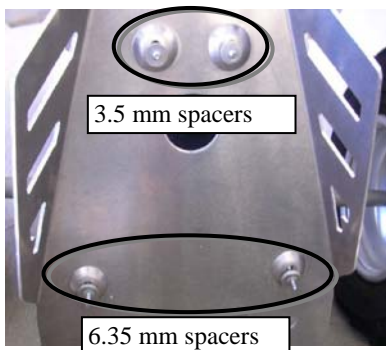
⚠WARNING Gasoline (fuel) and its vapors are highly flammable and explosive. Keep away from sparks, cigarettes, flames or other sources of ignition.



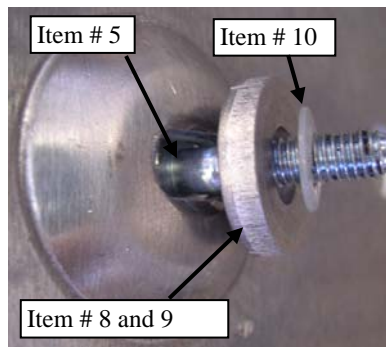
- b) Remove OEM Frame Skid Plate
- c) Clean all mounting surfaces.

3. Installation:

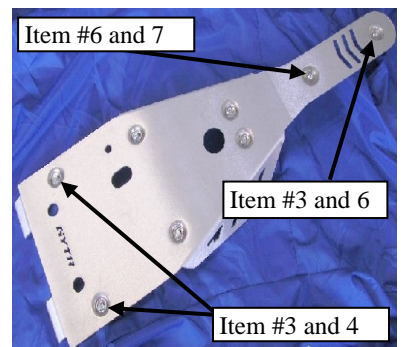
- a) Preassemble fasteners to Frame Skid Plate as shown in steps B through E.



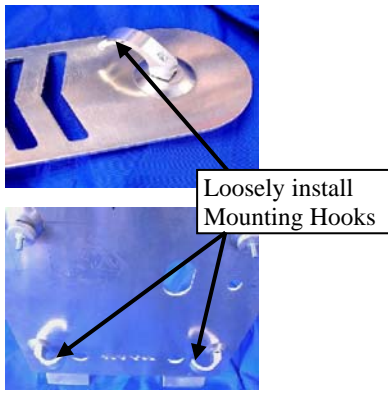
- b) Locations of 20mm Flange Head Bolt (**Item # 5**), 6.35mm Aluminum Spacer (**Item # 8**), 3.5mm Aluminum Spacer (**Item # 9**) and Nylon Retaining Washer (**Item # 10**).



- c) For Fasteners in step b: Insert Flange Head Bolts into the Frame Skid Plate, next slide on the Aluminum Spacers. Twist Nylon Retaining Washer all the way onto bolt to hold the fasteners in place.



- d) Locations of 16mm Flange Head Bolts (**Item # 4**) and Binding Head Screws (**Item # 6**) for Mounting Hooks (**Item # 3**) and Frame Skid Nut (**Item # 7**) shown above.



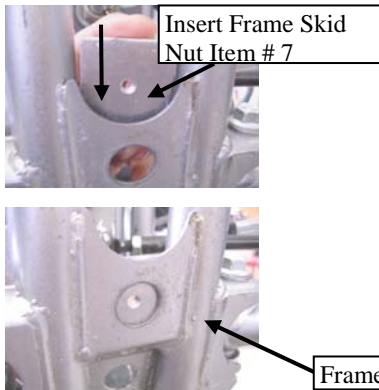
e) Loosely install Mounting Hook (Item # 3). Engage a few threads of the Binding Head Screw (Item # 6) into hook. Twist hooks inward for installation.



f) Place Frame Skid Plate onto underside of bike. Start center bolts and then twist hooks out over frame.



g) Mounting Hook (Item # 3) grabbing locations shown above.



h) Placement of (Item # 7). The Frame Skid Nut should be installed last. Apply a medium strength thread adhesive (such as Threadlocker 242 by Loctite®) to the threads of eight bolts

i) Torque Flange Head Bolts (Item # 4 and #5) to 10 N-m (7 ft-lbs) and Binding Head Screws (Item # 6) to 7 N-m (5 ft-lbs)

4. Maintenance:

Periodically check torque on all hardware. If loose hardware is found, remove hardware, clean off old Loctite, re-apply fresh Loctite and re-torque to specification.

4. Care and Cleaning:

Wash using a mild soap and water solution and a scotch bright pad if needed.

5. Customer Service:

For further information see your Yamaha dealer.