



# INSTALLATION INSTRUCTIONS

## Passenger Seat Kit

### 1TP-F47E0-S0 (R-Spec)

### 1TP-F47E0-T0 (Standard)

### XVS95CE (Bolt)



**DEALER OR INSTALLER:**

These instructions contain important information for future reference and *must* be given to the customer.

**⚠WARNING**

Read and understand these instructions completely before installation to avoid possible injury, as well as possible damage to the accessory or vehicle.

**WARRANTY INFORMATION:**

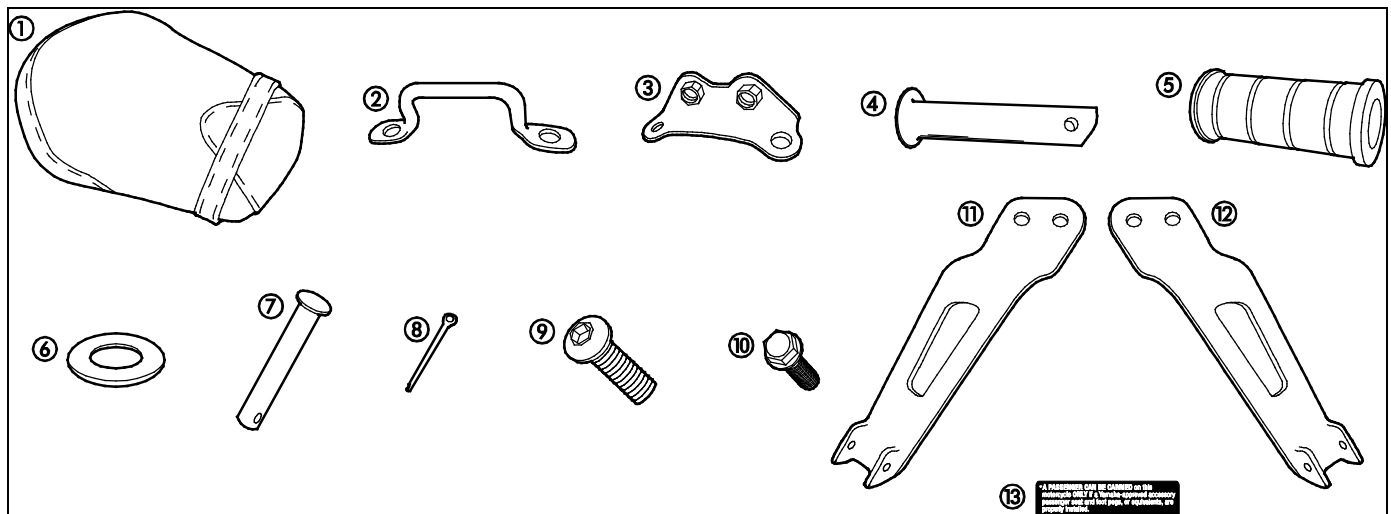
Genuine Star Accessories are covered by a one year limited warranty against defects in material or workmanship. Labor for replacement of defective components is not covered. See your Yamaha dealer for a copy of the warranty statement.

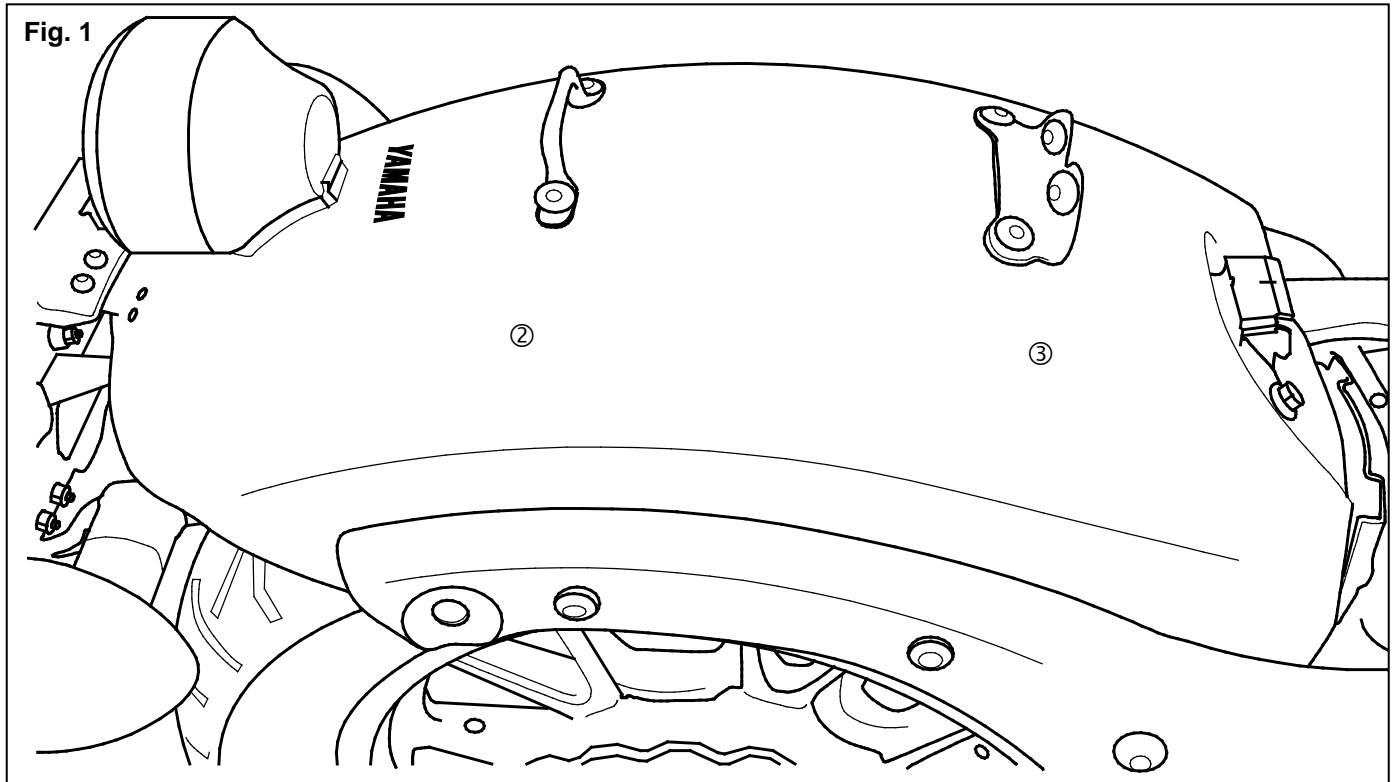
**PARTS LIST:**

This kit contains the following components. Before beginning installation, confirm there are no missing or damaged components.

Item	Part Number	Description	Qty.
--	1TP-F47E0-xx	Passenger Kit (Standard/R-Spec)	--
①	*	Passenger Seat	1
②	*	Bracket, Loop	1
③	*	Bracket, Special	1
④	*	Foot Peg	2
⑤	*	Foot Peg Cover	2
⑥	*	Washer (32mm)	2
⑦	*	Pin, Pivot	2
⑧	*	Pin, Cotter	2
⑨	*	Bolt, Hex Socket (M8 x 20mm)	4
⑩	*	Bolt, Flange (M8 x 12mm)	2
⑪	*	Foot Peg Bracket, Left	1
⑫	*	Foot Peg Bracket, Right	1
⑬	*	Label, Caution	1

\* Part supplied with kit only and not available separately.





**PREPARATION:**

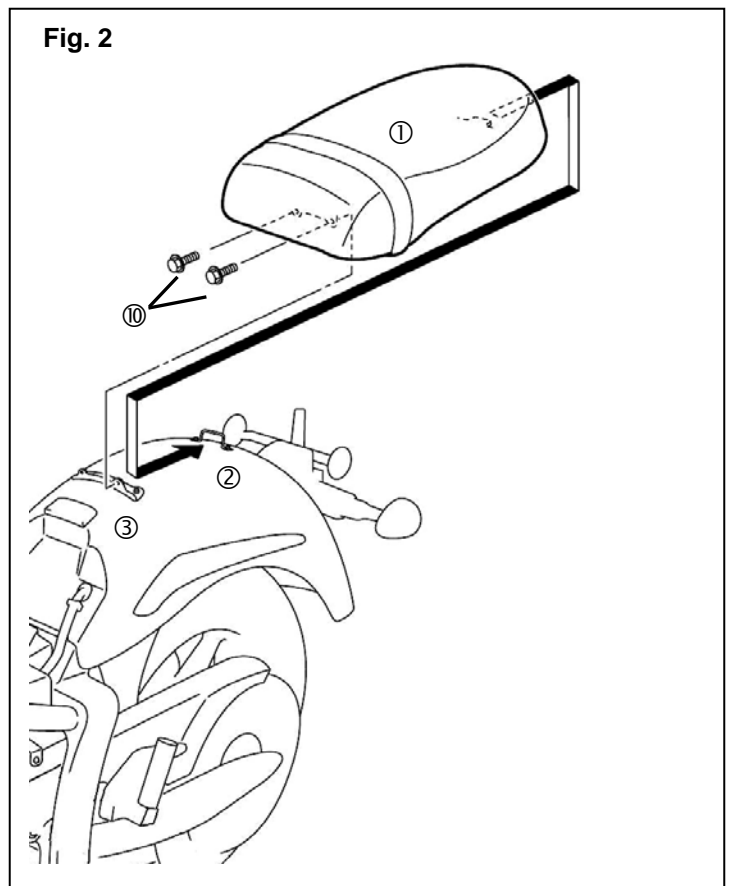
1. Place motorcycle on a secure and level surface.
2. Clean all mounting surfaces before beginning installation.

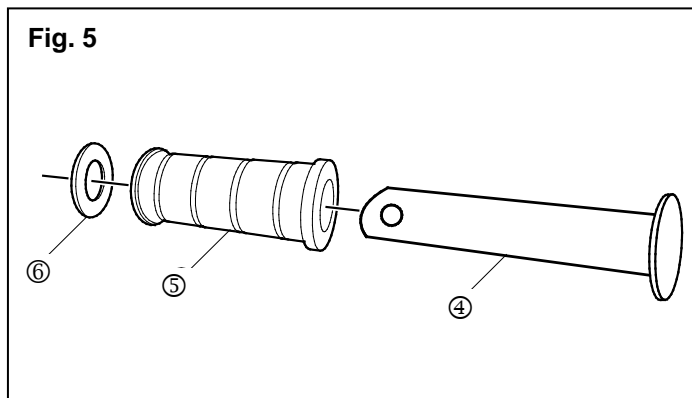
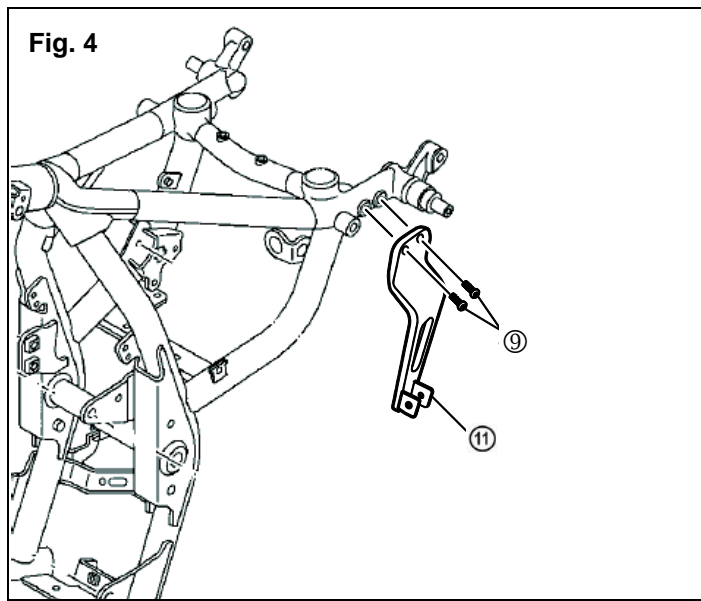
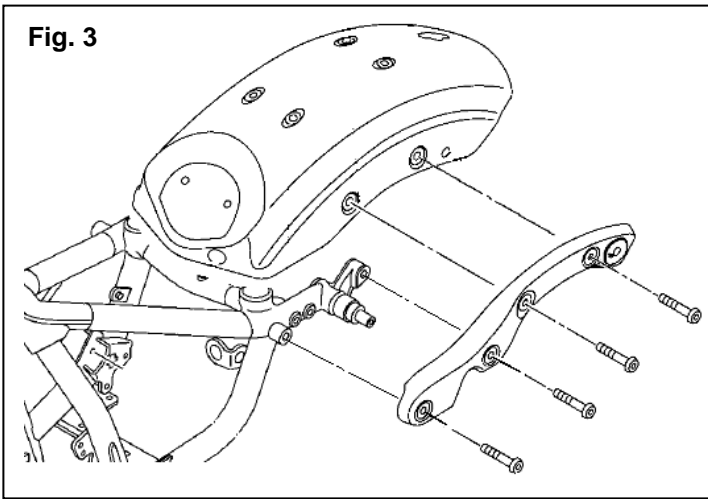
**INSTALLATION:**

1. Remove the four bolts located on the top of the rear fender.
2. Install the special bracket ③ at the front position on the fender and the loop bracket ② at the rear of the fender using the bolts from the previous step (Fig. 1).
3. Install the passenger seat ① by making sure the rear tab on the bottom of the seat is slipped under the loop bracket then secure the seat to the front bracket using two flange bolts ⑩ (Fig. 2). Torque the bolts to 20 Nm (2.0 m·kg, 14 ft·lb).

**CAUTION:**

**Verify seat is properly latched by pulling up on the front and rear of seat. If properly installed, the seat will not lift up.**

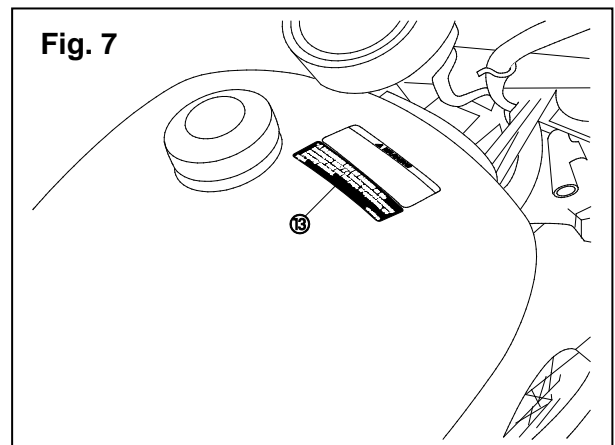
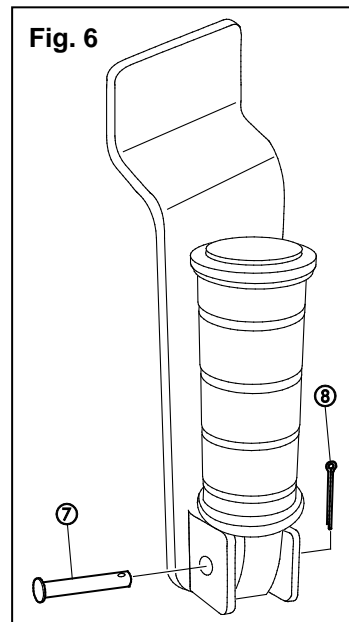




4. Starting with the left side, remove the fender sidearm by removing the four button head bolts. Retain all hardware (Fig. 3).
5. Install the left foot peg bracket ⑩ using two hex bolts ⑨ (Fig. 4). Torque bolts to 23 Nm (2.3 m-kg, 17 ft-lb).
6. Slide one foot peg cover ⑤ over one foot peg ④ and place one washer ⑥ over the end of the foot peg (Fig. 5).
7. With the foot peg folded in the up-position, tap in the pivot pin ⑦ and secure with a cotter pin ⑧ (Fig. 6).

**NOTE: The bevel cutaway on the foot peg should be facing upward.**

8. Remount the fender sidearm using the four original button head bolts. Torque the front M10 bolts to 65 Nm (6.6 m-kg, 48 ft-lb) and the rear M8 bolts to 28 Nm (2.9 m-kg, 21 ft-lb).
9. Repeat the same procedure on the right side.
10. Adhere caution label ⑬ to tank directly below existing warning label (Fig. 7).



**MAINTENANCE:**

Periodically, check torque on all hardware. If loose hardware is found, re-torque to specification.

**CARE AND CLEANING:**

Wash using a mild soap and water solution and a soft cloth.

**CUSTOMER SERVICE:**

For further information, see your Yamaha dealer.

**ESTIMATED TIME TO INSTALL: 0.5 HRS**