

INSTALLATION INSTRUCTIONS

DESCRIPTION: Heavy Duty Brush Guard Kit

PART NUMBER: 2PG-F84L0-V0

MODEL: Viking, Viking VI



⚠ WARNING

Please read and understand these instructions completely before installation to avoid possible injury, or damage to the accessory or vehicle.

NOTICES:

This installation requires a torque wrench and should be performed by an authorized Yamaha dealer or other qualified technician.

WARRANTY INFORMATION:

Genuine Yamaha Accessories are covered by a one-year limited warranty against defects in material or workmanship. Labor for replacement of defective components is not covered. See your Yamaha dealer for a copy of the warranty statement.

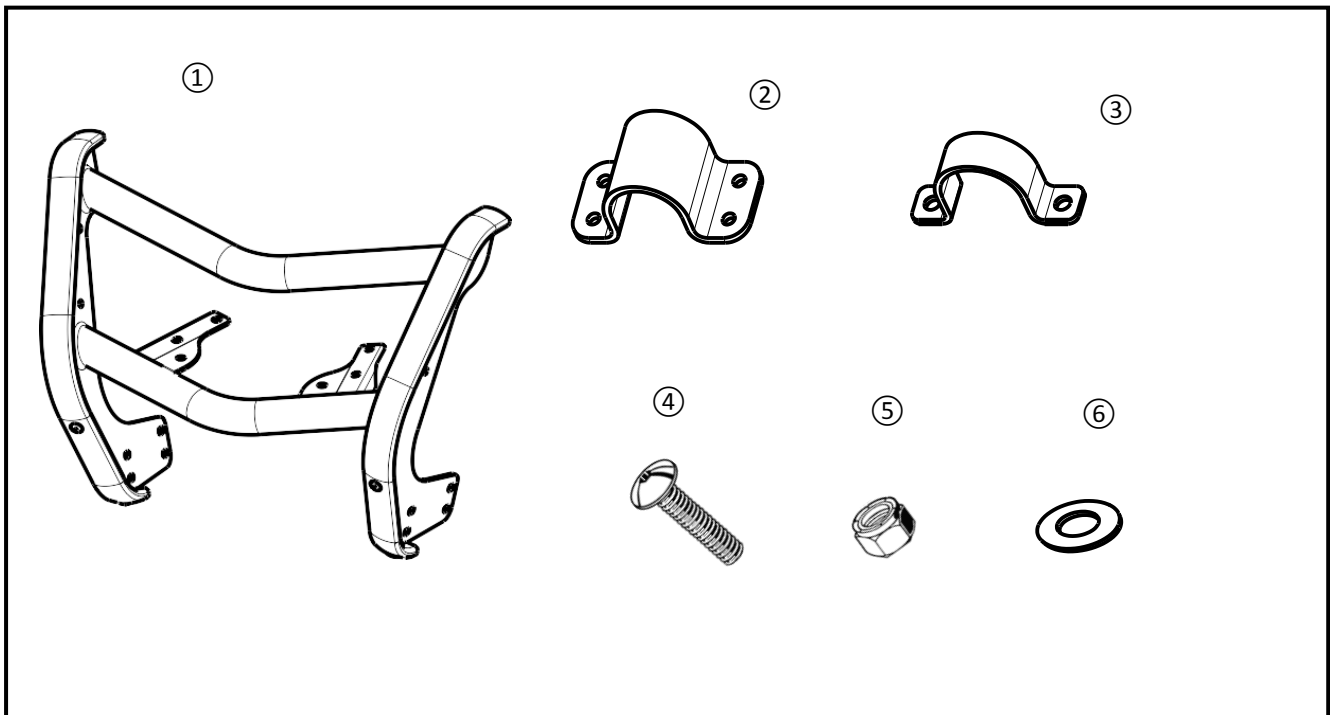
DEALER OR INSTALLER:

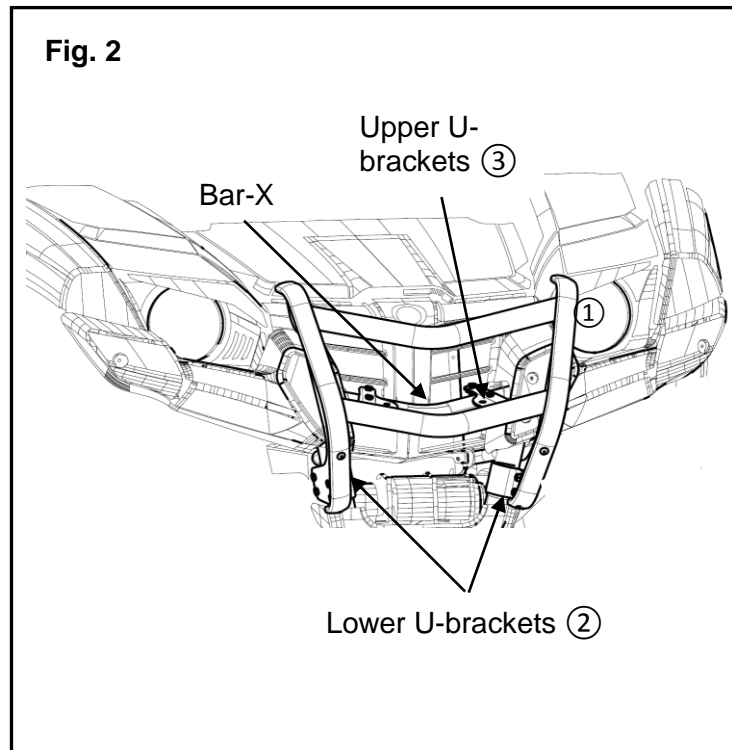
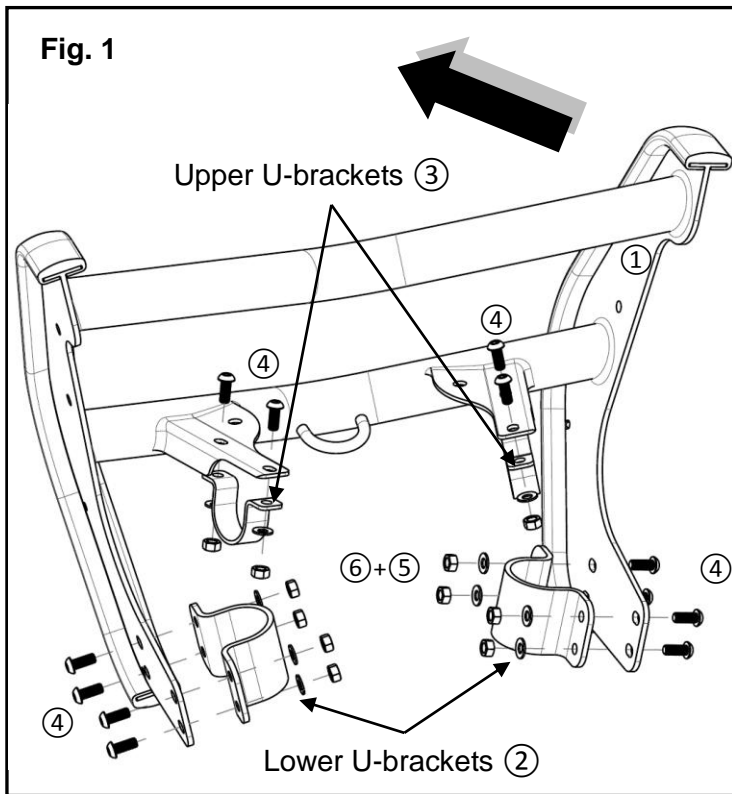
These instructions contain important information for future reference and *must* be given to the customer.

PARTS LIST:

No.	Part Number	Description	Qty
--	2PG-F84L0-V0	Heavy Duty Brush Guard Kit	--
①	*	Front Carry Bar	1
②	*	Lower U-Bracket	2
③	*	Upper U-Bracket	2
④	*	M8 Button-Head Bolt M8 x 1.25 x 20 mm	12
⑤	*	Nylock Nut	12
⑥	*	Washer	12

* Part supplied with kit only and not available separately.





PREPARATION:

- Place the vehicle on a secure and level surface.
- Set the parking brake.
- Clean the mount surfaces before starting installation.

INSTALLATION:

1. Examine upper and lower U-bracket mounting positions shown in (Fig. 1).
2. Locate the Front Carry Bar ①, Upper U-Bracket ③, 2 M8 Button-Head Bolts ④, 2 Nylock Nuts ⑤, and 2 Washers ⑥ and stage them at the front of the vehicle.
3. Fit the front bumper to the vehicle and begin by placing an Upper U-Bracket ③ in position on bar-X as shown in (Fig. 2).
4. Loosely install Button-Head Bolts ④, Washers ⑥, and Nylock Nuts ⑤. Do not tighten them at this time.
5. Install the other Upper U-bracket ③ and again keep the hardware loose at this time.
6. Locate the lower U-brackets ② and install them as shown in (Fig. 2) using the M8 Button-Head Bolts ④, Washers ⑥, and Nylock Nuts ⑤.
7. Torque all nylock nuts ⑤ to 25 Nm (2.5 m - kg, 18 ft - lb).

MAINTENANCE:

Periodically, check torque on all hardware. If loose hardware is found, re-torque to specification.

CARE AND CLEANING:

Clean painted metal parts with a clean soft cloth and mild soap and water. Rinse and dry.

CUSTOMER SERVICE:

For further information see your Yamaha dealer.

ESTIMATED TIME TO INSTALL: 0.3 HRS