



**INSTALLATION INSTRUCTIONS
BILLET OIL FILLER CAP
GYT-2S235-01-00
2006 YZ450F**



⚠ WARNING

Please read and understand these instructions completely before installation to avoid possible injury to yourself, or damage to the accessory or vehicle.

CAUTION:

- This installation should be performed by an authorized Yamaha dealer or a qualified mechanic. Some components require information from the model's service manual for proper installation or adjustment. Be sure to have the service manual on hand, if necessary, before proceeding with the installation.

Dealer:

These instructions contain important information for future reference and *must* be given to the customer.

Warranty Information:

- Genuine Yamaha GYTR components are covered by a 90-day warranty against defects in material or workmanship. Labor for replacement of defective components is not covered. See your Yamaha dealer for a copy of the warranty statement.
- The Yamaha Limited Warranty provided with new Yamaha vehicles has exclusions for certain failures, including those caused by competition or racing use (except YZ and WR motorcycle models) as well as by abnormal strain or abuse. While installation of these GYTR components will not "void" your vehicle's warranty, specific failures adjudged by Yamaha to have resulted from the installation of accessory components or other modifications, or from competition use (except YZ and WR motorcycle models), may not be covered by warranty or Yamaha Extended Service.

1. Kit Contents:

This kit contains the following components, before beginning installation confirm there are no damaged or missing items.

Item #	Part Number	Part Name and Description	Qty
1	GYT-2S235-01-00	Oil Filler Cap	1

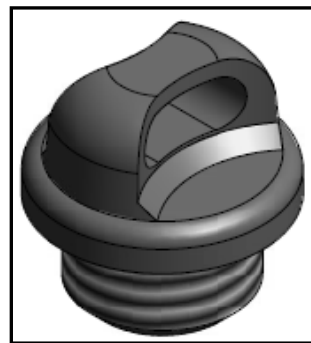
2. Preparation:

- Clean all mounting surfaces before beginning installation to prevent dirt or debris from entering fill hole.

3. Installation:

- Place the vehicle on a stable stand.
- With the vehicle off and the engine cool remove the stock oil filler plug, take off the o-ring and inspect for wear.
- If the o-ring is damaged or hardened, replace it with a new one.
- Install the new filler plug and o-ring. Hand-tighten to a snug fit.

Item #1



4. Maintenance:

Periodically check for tightness and re-torque as required.

5. Care and Cleaning:

Wash using a mild soap and water solution and soft cloth.