



INSTALLATION INSTRUCTIONS
GYTR Slip-on Muffler Kit
18P-E47A0-T0
2009 YFZ450R

**⚠ WARNING**

Please read and understand these instructions completely before installation to avoid possible injury to yourself or damage to the accessory or vehicle.

CAUTION:

- This installation should be performed by an authorized Yamaha dealer or a qualified mechanic. Some components require information from the model's Service Manual for proper installation or adjustment. Be sure to have the Service Manual on hand, if necessary, before proceeding with the installation.
- Alteration of emission-related components constitutes tampering under Federal and State Laws and can lead to substantial fines and penalties if used other than in closed-course competition.
- Engine-related competition parts are intended for only closed-course racing applications.

DEALER:

These instructions contain important information for future reference and *must* be given to the customer.

WARRANTY INFORMATION:

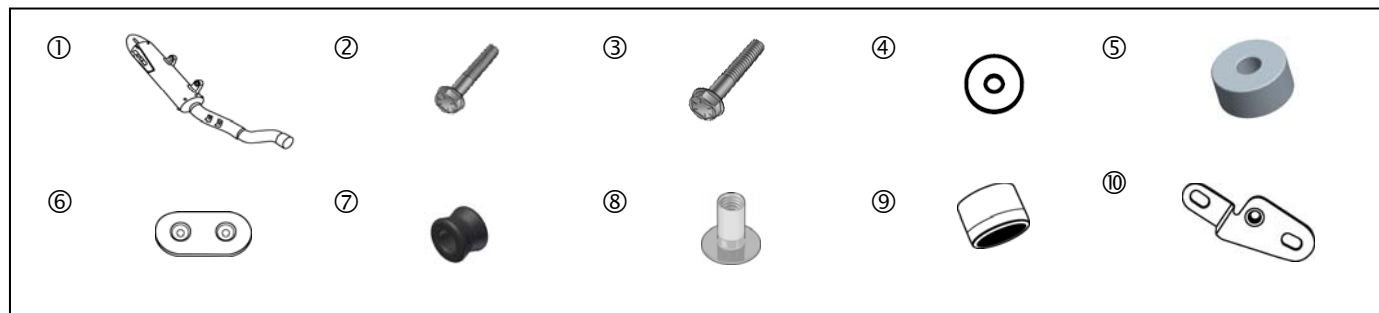
- Genuine Yamaha GYTR components are covered by a 90-day limited warranty against defects in material or workmanship. Labor for replacement of defective components is not covered. See your Yamaha dealer for a copy of the warranty statement.
- The Limited Warranty provided with new Yamaha vehicles has exclusions for certain failures, including those caused by competition or racing use (except YZ and WR motorcycle models) as well as by abnormal strain or abuse. While installation of these GYTR components will not "void" your vehicle's warranty, specific failures adjudged by Yamaha to have resulted from the installation of accessory components or other modifications, or from competition use (except YZ and WR motorcycle models), may not be covered by warranty or Yamaha Extended Service.

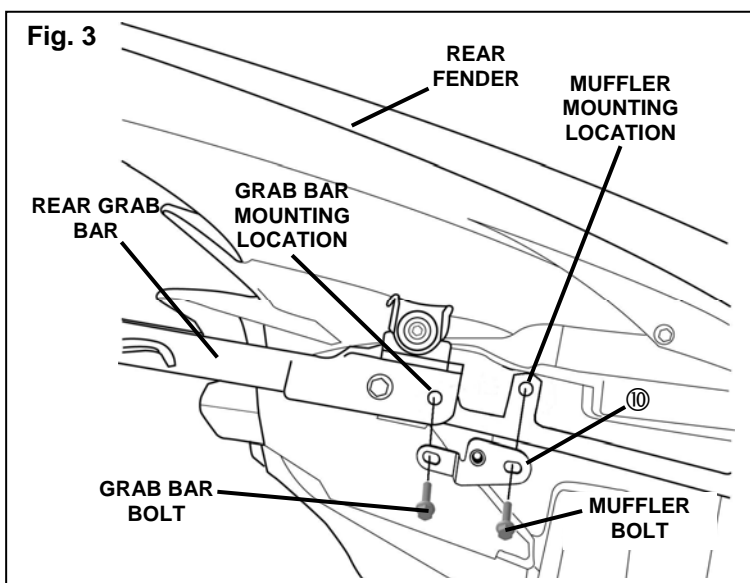
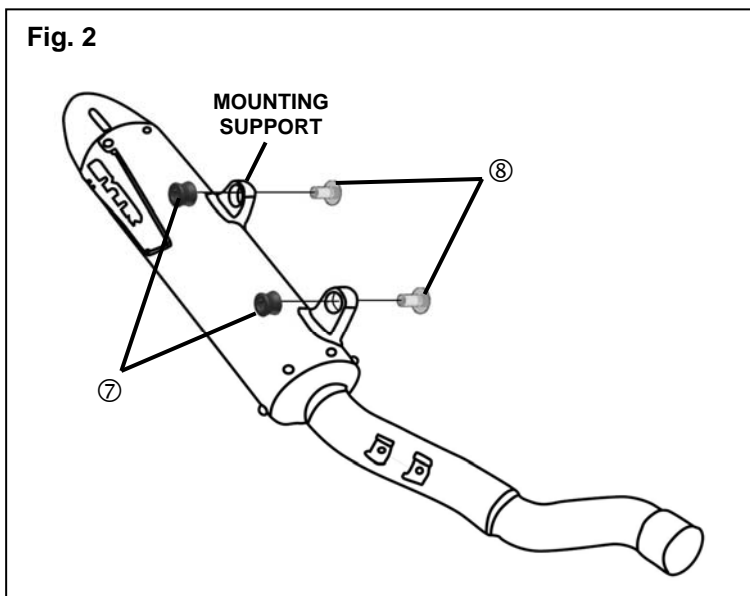
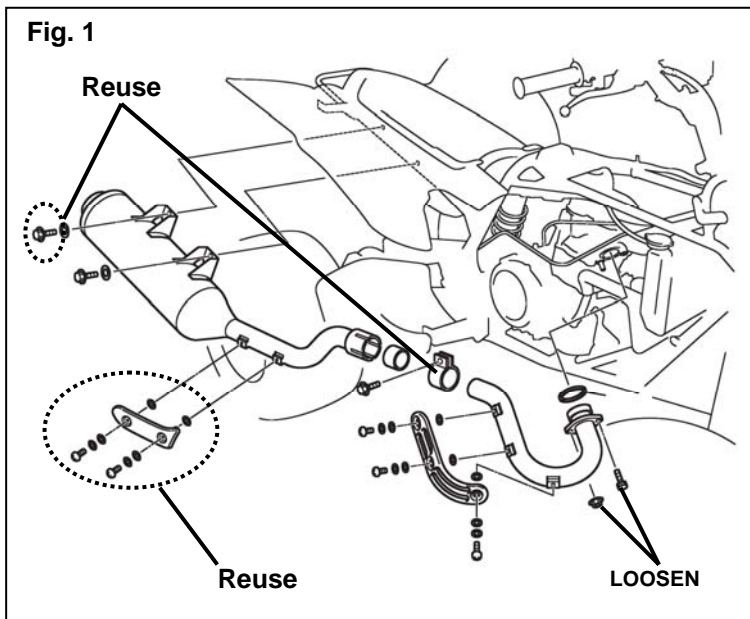
PARTS LIST:

This kit contains the following components. Before beginning installation, confirm there are no missing or damaged components.

Item	Part Number	Description	Qty
--	18P-E47A0-T0	GYTR Race Slip-on Muffler Kit	--
①	*	Muffler Assembly	1
②	*	Flange Head Bolt (M8 x 1.25 x 45mm LG)	1
③	*	Flange Head Bolt (M8 x 1.25 x 55mm LG)	1
④	*	Washer	2
⑤	*	Spacer	2
⑥	*	Muffler Heat Shield	1
⑦	5BE-14747-00	Damper	2
⑧	90387-08081	Collar	2
⑨	8FA-14714-10	Muffler Gasket	1
⑩	*	Bracket	1

* Part supplied with kit only and not available separately.





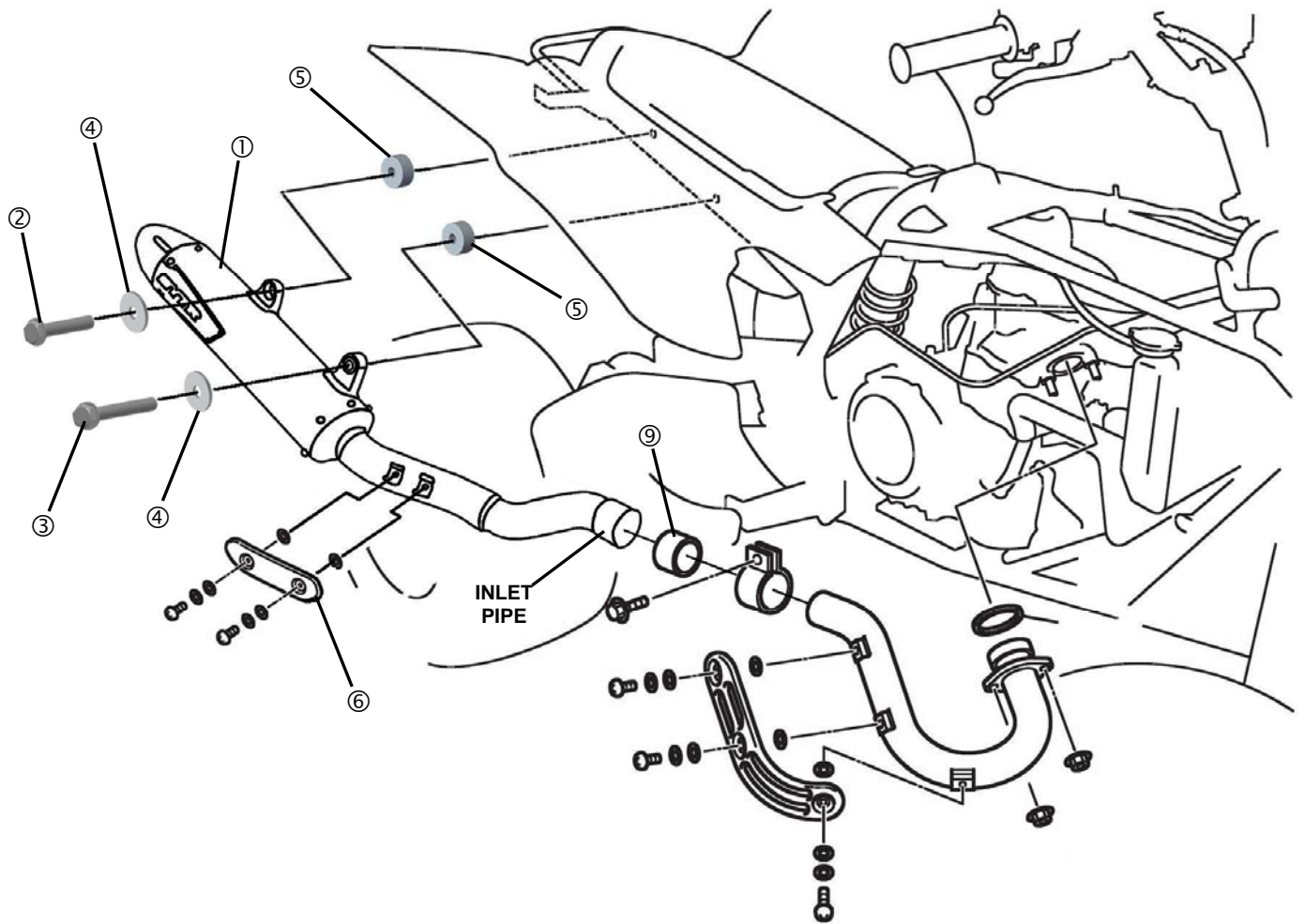
PREPARATION:

1. Place ATV on a secure level surface and set the parking brake.
2. Allow exhaust to cool down and clean all mounting surfaces before beginning installation.
3. Remove the muffler system. Retain the clamp, the muffler heat shield and all hardware for reuse (Fig. 1) (refer to Owner's Service Manual).
4. Loosen the head pipe nuts. Do not remove the head pipe (Fig. 1).

5. Install the dampers ⑦ and the collars ⑧ into the muffler mounting supports as shown in Figure 2.

6. Remove the front bolt securing the rear grab bar to the sub-frame (Fig. 3).
7. Install the bracket ⑩ onto the rear sub-frame using the rear grab bar bolt, removed on step 6, and one of the original muffler mounting bolts as shown in Figure 3.

Fig. 4



INSTALLATION:

NOTE:



Apply Loctite® 567 to all fasteners
Part # ACC-56747-PS-T0

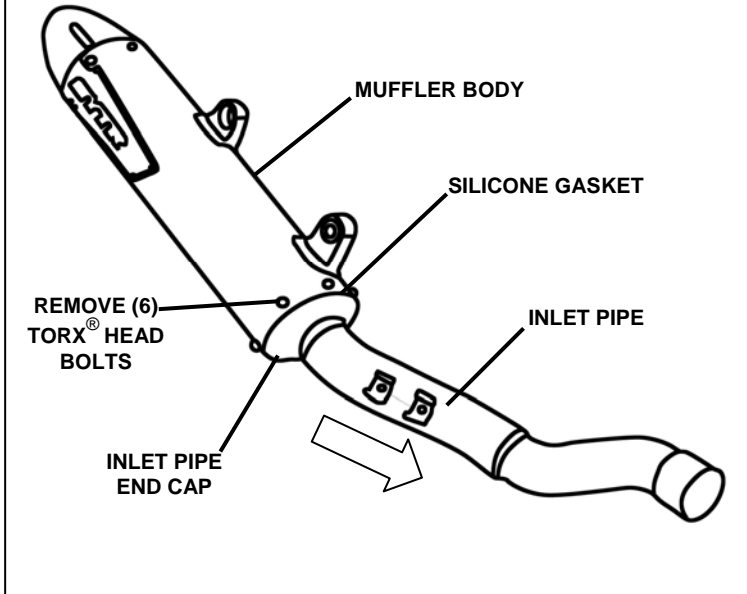
1. Install the muffer gasket ⑨ and the stock clamp onto the muffer inlet pipe. Make sure the clamp is loose on the muffer pipe (Fig. 3).
2. Insert the muffer inlet pipe into the head pipe. Do not tighten the clamp at this time (Fig. 4).
3. Insert the short (45mm) flange head bolt ② through the rear muffer support, the spacer ⑤ and into the bracket ⑩ on the sub-frame. Do not tighten bolts at this time (Fig. 4).
4. Insert the long (55mm) head flange bolt ③ through the front muffer support, the spacer ⑤ and into the stock mounting location on the sub-frame (Fig. 4). Torque the flange head bolts on the muffer supports to 26 Nm (19 ft • lbs)

5. Check the position of the clamp on the inlet pipe and tighten the bolt to 20 NM (14 ft • lbs).
6. Verify that the pipe and muffer are aligned correctly and don't touch or rub against the frame, air box or brake cable supports.
7. Torque the head pipe nuts to 13 NM (9.4 ft • lbs).
8. Install the muffer heat shield ⑥ onto the muffer pipe using the stock bolts and washers as shown in Figure 4. Torque the bolts to 6 Nm (4.5 ft • lbs).

MAINTENANCE:

Periodically, check torque on all hardware. If loose hardware is found, remove hardware, clean off old Loctite®, re-apply fresh Loctite® and re-torque to specification. Muffer Packing should be replaced every 8 hours minimum to avoid possible heat damage to the muffer shell. The life of your silencer packing can vary dependent on your riding ability and condition. Check often at first to determine how often packing material should be replaced.

Fig. 5



Muffler Repacking Instructions:

1. Remove the muffler from the ATV.
2. Use a utility knife to score the silicone gasket between the muffler body and the inlet pipe end cap (Fig. 5).
3. Remove the six Torx® head bolts securing the inlet pipe end cap to the muffler body (Fig. 5).
4. Pull out the core assembly from the muffler shell. If the packing material does not come out of the muffler shell with the core assembly, then remove the packing material from the muffler shell.
5. Slide the new packing cartridge (P/N: GYT-5TA93-33-KT) over the perforated core and then insert the entire assembly back into the muffler shell.
6. Apply a bead of high-temp silicone around the inlet pipe end cap.
7. Reinstall inlet pipe end cap onto the muffler body and secure in place using the original Torx® head bolts. Make sure to apply Loctite® 567 (P/N: ACC-56747-PS-T0) to all fasteners.
8. Torque the Torx® head bolts to 10 Nm (7.4 ft • lbs).

CARE AND CLEANING:

Wash with soap and water. We recommend you purchase a GYT-R Exhaust Plug (P/N: ABA-5BE87-PL-UG) and insert it into the end cap to keep water out of your exhaust.

CUSTOMER SERVICE:

For further information, see your Yamaha dealer.

ESTIMATED TIME TO INSTALL: 0.2 HRS