



**INSTALLATION INSTRUCTIONS**  
**A-Arm Skid Plate Kit**  
**18P-F31A0-V0**  
**2009 YFZ450R**

**⚠WARNING**

Please read and understand these instructions completely before installation to avoid possible injury to yourself or damage to the accessory or vehicle.

**CAUTION:**

This installation should be performed by an authorized Yamaha dealer or a qualified mechanic. Some components require information from the Model's Service Manual for proper installation or adjustment. Be sure to have the Service Manual on hand, if necessary, before proceeding with the installation.

**DEALER:**

These instructions contain important information for future reference and *must* be given to the customer.

**WARRANTY INFORMATION:**

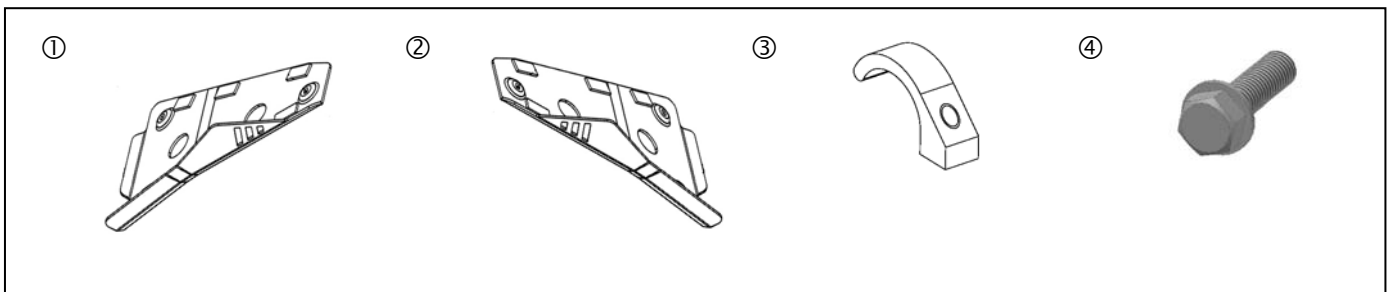
- Genuine GYTR components are covered by a 90-day warranty against defects in material or workmanship. Labor for replacement of defective components is not covered. See your Yamaha dealer for a copy of the warranty statement.
- The Limited Warranty provided with new Yamaha vehicles has exclusions for certain failures, including those caused by competition or racing use (except YZ and WR motorcycle models) as well as by abnormal strain or abuse. While installation of these GYTR components will not "void" your vehicle's warranty, specific failures adjudged by Yamaha to have resulted from the installation of accessory components or other modifications, or from competition use (except YZ and WR motorcycle models), may not be covered by warranty or Yamaha Extended Service.

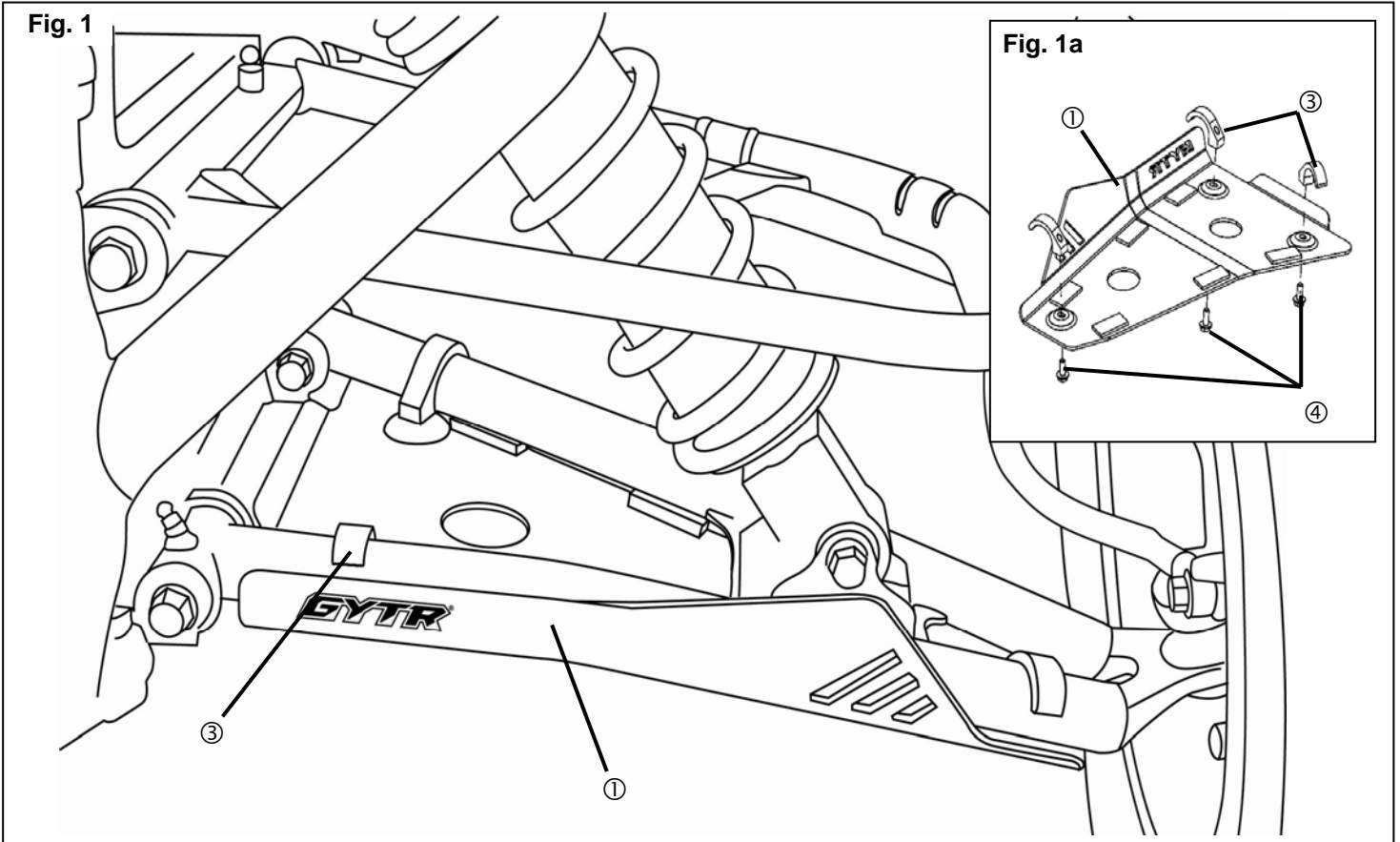
**PARTS LIST:**

This kit contains the following components. Before beginning installation, confirm there are no missing or damaged components.

Item	Part Number	Description	Qty
--	18P-F31A0-V0	A Arm Skid Plate Kit	--
①	*	A-Arm Skid Left	1
②	*	A-Arm Skid Right	1
③	*	Hook	6
④	*	Flange Bolt (M6 x 1.0 x 25mm lg)	6

\* Part supplied with kit only and not available separately.





**PREPARATION:**

1. Place ATV on a secure level surface and set the parking brake.
2. Clean all mounting surfaces before beginning installation.

**INSTALLATION:**

**NOTE:**



Apply Loctite® 242 to all fasteners  
Part # ACC-24221-TL-00

1. Install three hooks ③ onto the left skid plate ① using three flange bolts ④. Make sure to only engage a few threads of each bolt in each of the hooks (Fig. 1).
2. Place the left skid plate ① under the left A-Arm. Make sure that the GYT-R logo faces towards the front of the ATV.
3. Position the hooks ③ so that skid plate lies flush with the A-Arm tubes.
4. Rotate the hooks so that they engage the top of each A-Arm tube.

5. Torque a-arm bolts to 15 Nm (11ft • lbs.)
6. Turn handlebar lock to lock in order to check for clearance between front rims and A-arm skid plates. If there is interference check for hook orientation.
7. Repeat steps above to install the right side skid plate ②.

**MAINTENANCE:**

Periodically, check torque on all hardware. If loose hardware is found, remove hardware, clean off old Loctite, re-apply fresh Loctite and retorque to specification.

**CARE AND CLEANING:**

Clean using a soft cloth and a non-abrasive metal polisher, such as Simichrome Polish (P/N: ACC-1100-19-01).

**CUSTOMER SERVICE:**

For further information, see your Yamaha dealer.

**ESTIMATED TIME TO INSTALL: 0.3 HRS**