



SSV WORKS, 201 N. Rice Ave Unit A, Oxnard, CA 93030
www.SSVworks.com | Phone: 818-991-1778 | Fax: 866-293-6751

2MB-H81D0-V1 Yamaha Wolverine 6.5" Speaker Front Kick Panels

WARRANTY INFORMATION:

All SSV Works enclosures are covered by a limited lifetime warranty against defects in material or workmanship. All SSV Works Electronics are covered by a limited 1 year warranty against defects in material or workmanship. All SSV Works Speakers are covered by a limited 1 year warranty against defects in material or workmanship. Labor for replacement of defective components is not covered. Contact SSV Works for further warranty information.



Please read and understand these instructions completely before installation to avoid possible injury, or damage to the accessory or vehicle.

TOOLS NEEDED FOR INSTALLATION

- 10mm socket wrench
- T30 Torx wrench
- Wire cutters
- Drill and 1/4" drill bit

PARTS LIST IMAGES



1. 2MB-H81D0-V1 Enclosures (1 pair)



2. M6 x 25mm Screws x 2



3. M6 Washers x 4



4. 10mm Nut x 2



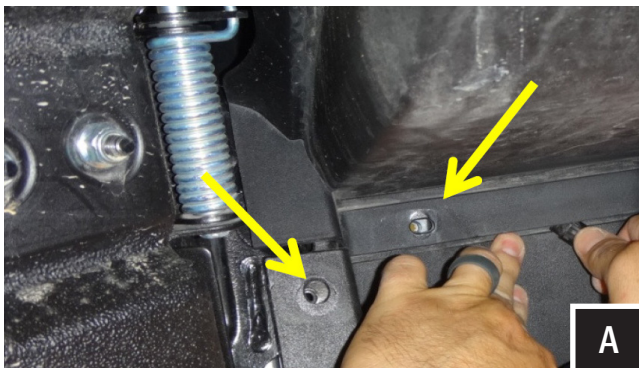
5. WP-HSJ129 Harness



6. WP-HAJ69 Harness



7. Zip Ties x 5



A

A. Begin by removing the 2-10mm bolts, 1 on the door sill and one on the upper foot well area, you will re-use these same bolts to mount the speaker pod.

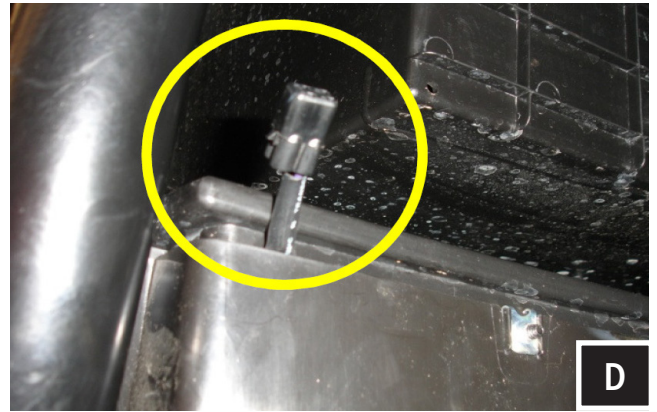


B

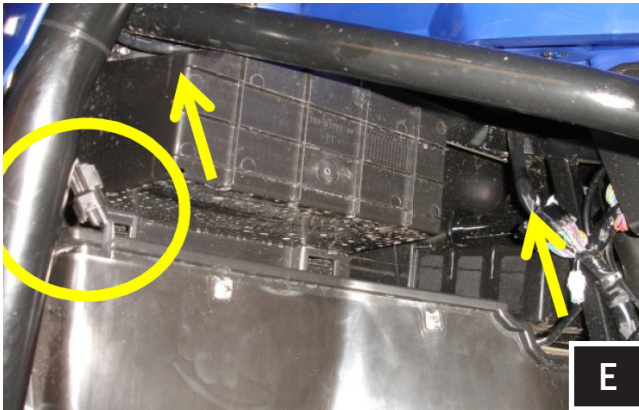
B. Gently press the floor away from the under dash and route the speaker wire harness through the floorboard joint.



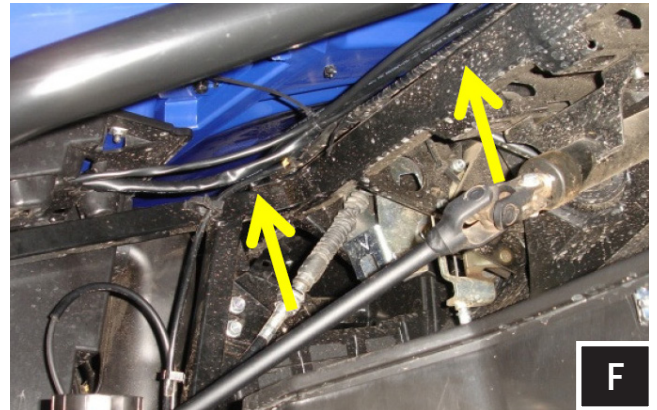
C. Using the 2-10mm bolts you removed from the floorboard install the speaker pod. The metal bracket will line up with the 2 bolt locations. The 3rd will be drilled with a 1/4" drill bit. Once this hole is drilled, complete the pod mounting by securing using the nut and bolt provided.



D. Once installation of the speaker pods is complete, there will be a 2 pin plug visible from the inner wheel well.



E. Plug the provided harness into each connector, the longer "leg" of the wire harness will be for the passenger side, the shorter "leg" will be for the driver side.



F. Secure the wire harness across the vehicle as shown. Be careful to avoid any moving parts during this step. The long portion of the harness should be visible in the driver wheel well area.



G. Remove the 2-10mm bolts from the floor.



H. Remove the side panel, there are 3-10mm bolts and 4 plastic fasteners holding this piece.



I. Remove the front wheel well protector, this is where the speaker cables will run down.



J. Routing the cable down this bar, then under the floor (step K)



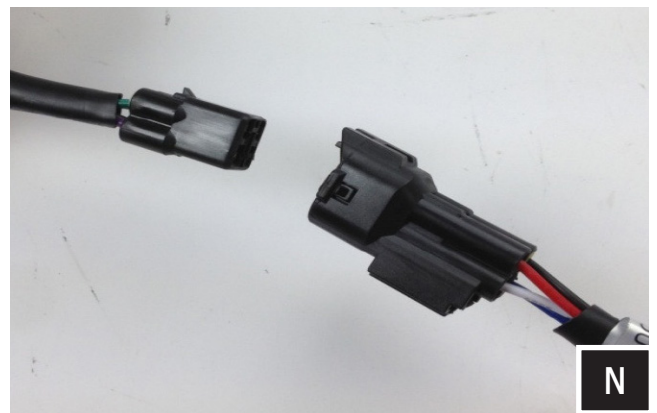
K. Route the cables along the floor to a location near the side of the driver seat to continue up the cage.



L. Run the cable up the cage (following the wires from the Overhead Stereo System).



M. Locate the short output harness coming out of the main unit.



N. Connect the 2 harnesses together.