

**PASSING LAMP MOUNTS
INSTALLATION INSTRUCTIONS**
STR-4XY35-10-00 Passing Lamps
STR-4XY35-40-00 Passing Lamp Mount
XVZ13TF "Venture"



INTRODUCTION

Please read and understand these instructions completely before installation to avoid any possible injury to yourself or damage to your motorcycle and/or accessory.

DEALER: These instructions contain important information for future reference and must be given to the customer.

IMPORTANT: Dealer installation is strongly recommended.

ATTENTION:

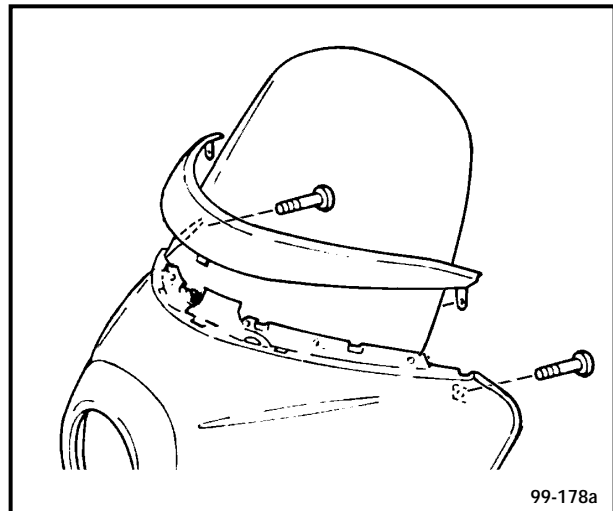
Check state regulations before installing this accessory. Some states allow "Passing Lamps" to be on at all times, while others allow them to be on only with the high beam or only with the low beam.

PARTS LIST			
Item	Part Name	Description	Qty
①*	Passing Lamp		2
②*	Passing Lamp Wire Harness		1
③*	Wire Connector	Blue	1
④*	Turn Signal Wire Harness Extension		1
⑤	Passing Lamp Mount		1
⑥	Collar	15.9mm OD x 12.4mm thick	2
⑦	Turn Signal Adapter	Chrome	2
⑧	Swivel Washer	Chrome	4
⑨	Special Bolt	Hollow, Hex Head	2
⑩	Bolt, Hex Socket Head	M8 x 1.25p x 35mm long	2
⑪	Washer	M10	2

*Included in Passing Lamp Kit

PREPARATION

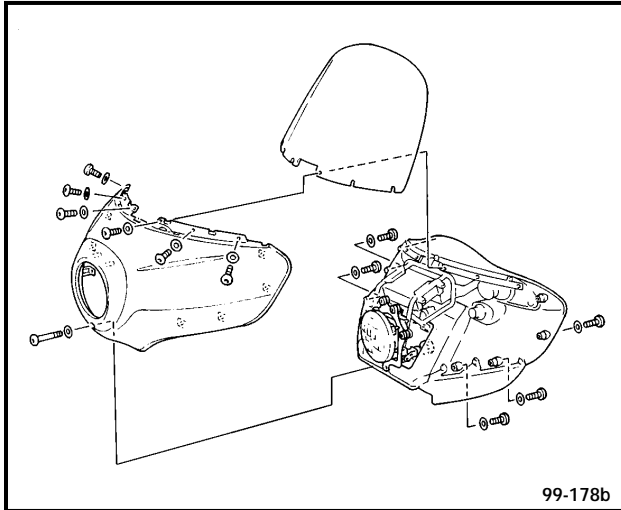
- Place the motorcycle securely on the side stand. Protect the front fender with a blanket or other covering.
- Remove the chrome front cowling cover by first removing its two mounting screws. Lift up each end of the cover, then push the center of the cover in and carefully lift the entire cover upward.



99-178a

PREPARATION (Cont'd.)

3. Remove the six screws now exposed along the bottom of the windshield. Lift the windshield upward and remove it.
4. Remove the screw at the bottom of the chrome headlight ring, and also the six screws which hold on the front of the fairing. Lift the front of the fairing off.



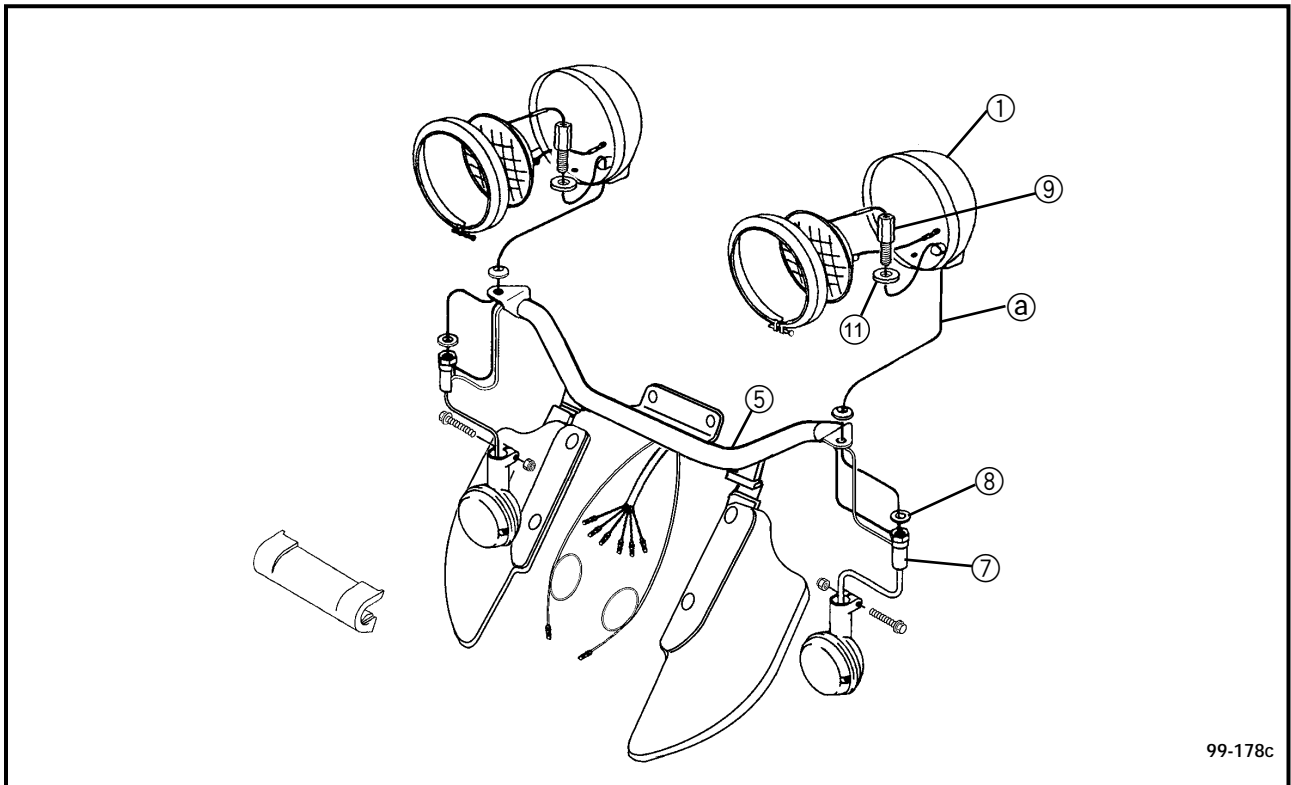
5. Remove the chrome cover from the turn signal mount. Unscrew the two Allen bolts holding the turn-signal mounting bar, then unplug the turn signal wires (noting the wire color codes for each side).

6. Remove the lower wind deflectors from the turn-signal mounting bar. Remove the turn signals with their wires from the mounting bar, then remove the rubber grommet from the center of the mounting bar. Store the original turn-signal mounting bar in case the Passing Lamps are removed in the future; the other parts will be reused.

PASSING LAMP ASSEMBLY

7. Working on a bench which has been covered with a clean towel or cardboard, remove the ring from each Passing Lamp ①. Pull the Red wire lead ⑩ out of the hole in the housing from inside, leaving it installed on the bulb.
8. Put a Washer ⑪ on the Special Bolt ⑨, then insert the Bolt down through the square hole in the Passing Lamp housing from inside. Put a Swivel Washer ⑧ on the Bolt ⑨ with the curved surface facing the housing, then insert the Bolt through the hole in the new Passing Lamp Mount ⑤.

NOTE: It may be necessary to "thread" the Bolt through the square hole.



PASSING LAMP ASS'Y. (Cont'd.)

9. Put another Swivel Washer ⑧ on the Bolt ⑨ with its flat surface against the Mount ⑤. Install the Turn Signal Adapter ⑦ onto the Bolt ⑨ and finger tighten. Turn the Turn Signal Adapter ⑦ so the slot is to the back, adjust the Passing Lamp Housing so it points straight ahead on the Mount, and then tighten the bolt securely. Repeat on the other side.
10. Feed the Red wire leads ③ of the Passing lamps through the hollow Special Bolts ⑨ from inside the lamp housing and out the Turn Signal Adapters ⑦.
11. Install the left Turn Signal (Black, Chocolate, Blue) on the left-side Turn Signal Adapter. Install the right Turn Signal (Black, Dark Green, Blue) on the right-side Turn Signal Adapter. Adjust the turn signals to match the position of the Passing Lamps, then tighten the mounting pinch bolts.
12. Feed a piece of safety wire (or other stiff wire) into the center slot of the Mount ⑤ and then out through the left-side end. Wrap the safety wire protruding out the left end of the mount around the left-hand turn signal's lead wires and the Red Passing Lamp lead wire, and secure the connector ends with electrical tape. Gently pull the safety wire back through the center slot of the mount as you feed the turn signal and passing lamp lead wires into the end of the mount. Pull the lead wires out of the center slot when they become visible, then remove the safety wire and electrical tape.
13. Feed the safety wire back into the center slot and out through the right-side end of the mount. Wrap the wire around the connector ends for the right turn signal and the Red Passing Lamp lead wire, and secure with electrical tape. Pull the leads through the mount as before. Put the grommet from the original turn-signal mount over all the lead wire ends and install it in place in the Passing Lamp Mount ⑤ center slot.

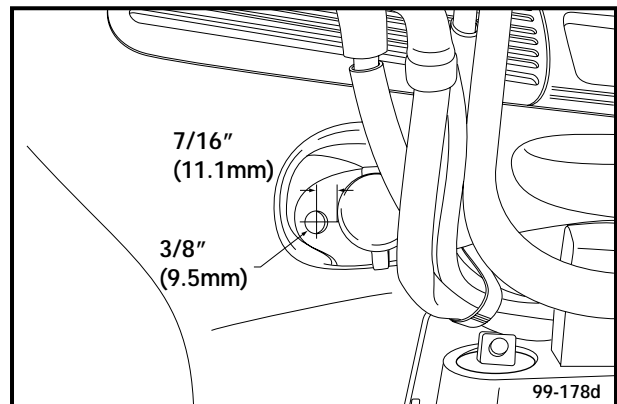
CAUTION:

To prevent chafing, wrap all wires with electrical tape where they pass through the turn signal adapter and where they enter the mount.

14. Reinstall the bulbs, then reinstall the rings on the Passing Lamp housings.
15. Connect the bullet connectors from the Turn Signal leads coming out of the mount to the matching colors of the Turn Signal Wire Harness Extension ④.
16. Install the lower wind deflectors which were removed from the original turn signal mounting bar on the new Passing Lamp Mount ⑤ using the original mounting screws.

PASSING LAMP INSTALLATION

17. From the driver's side of the fairing locate the Auxiliary DC Terminal near the bottom of the fairing on the left side. Cover the flat area to the left of the terminal with masking tape. Mark the spot in the middle of the flat area by measuring 7/16" (11.1mm) to the left of the rubber cap on the terminal.



18. Carefully drill a small pilot hole at this mark from the driver's side. Follow with a 3/8" (9.5mm) drill. Remove the masking tape, using isopropyl alcohol to remove remaining adhesive, if necessary.
19. Unscrew the rubber switch cover from the Passing Lamp Harness ②. Insert the switch through the hole from the inside of the fairing, then install and tighten the rubber cover from the driver's side.

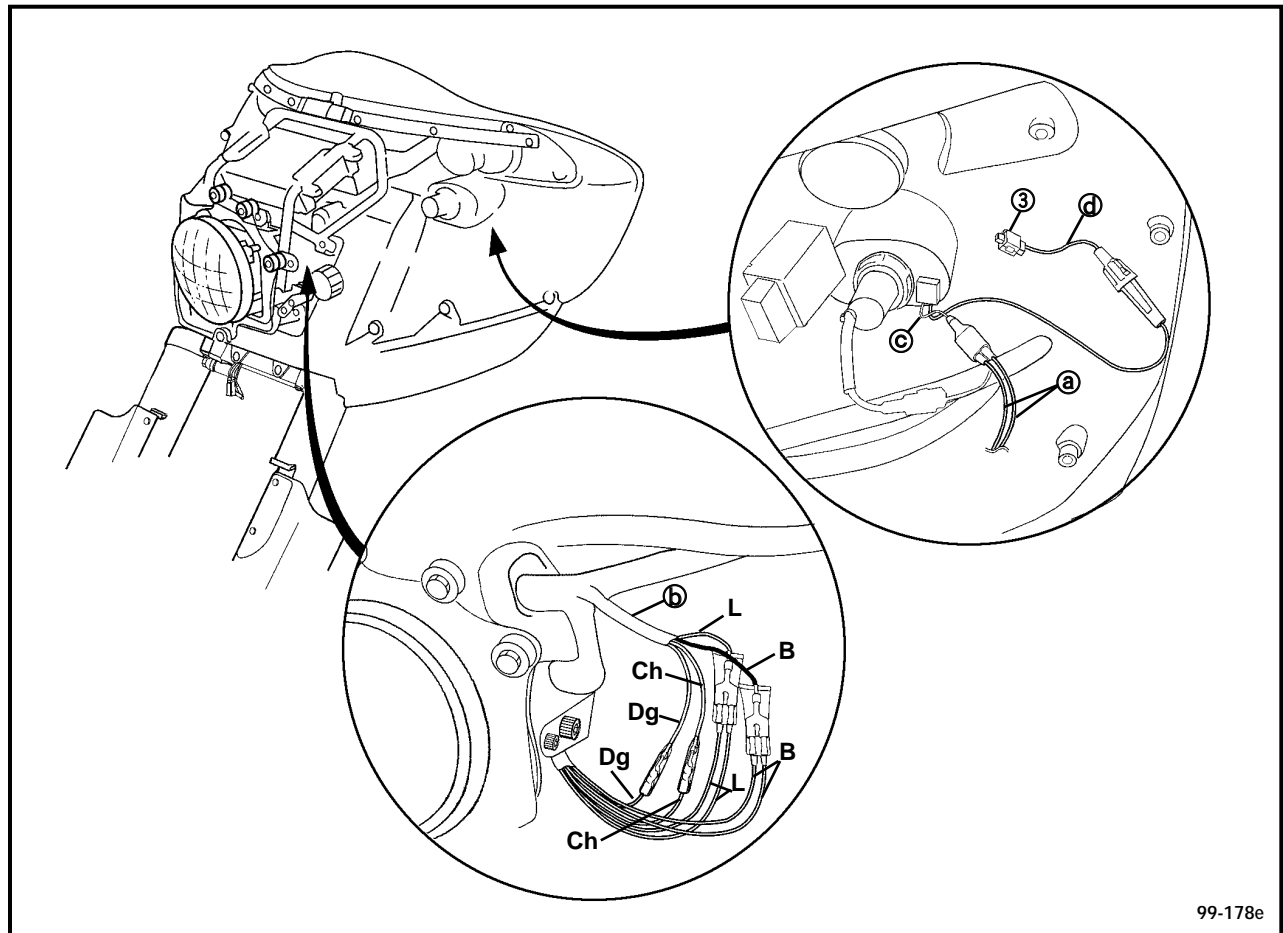
NOTE: Be sure the blanket or other cover is still securely in place on the front fender. Carefully rest the Passing Lamp/Wind Deflector Assembly on the front fender. Otherwise the front of the fairing cannot be reinstalled.

PASSING LAMP INSTALLATION (Cont'd.)

20. Connect the bullet connectors from the Turn Signal Wire Extension Harness ④ to the original harness ⑥ female connectors inside the fairing, being sure to match color codes correctly.

22. Connect the two Red leads ① from the Passing Lamps to the Black lead ③ of the Passing Lamp Wire Harness ②.

23. Test lighting to be sure passing lights and turn signals work correctly.



99-178e

21. Using the Wire Connector ③ provided, splice the Red wire ① from the Passing Lamp Harness to the motorcycle's wiring harness. Choose the correct wire for the proper lighting according to your state regulations as follows:

24. Reinstall the front of the fairing with its mounting screws. Reinstall the windshield with its mounting screws. Carefully reinstall the chrome front cowling cover by first inserting the tabs on the ends of the cover, and then by pressing the center portion in and down, and finally by tighten the mounting screws.

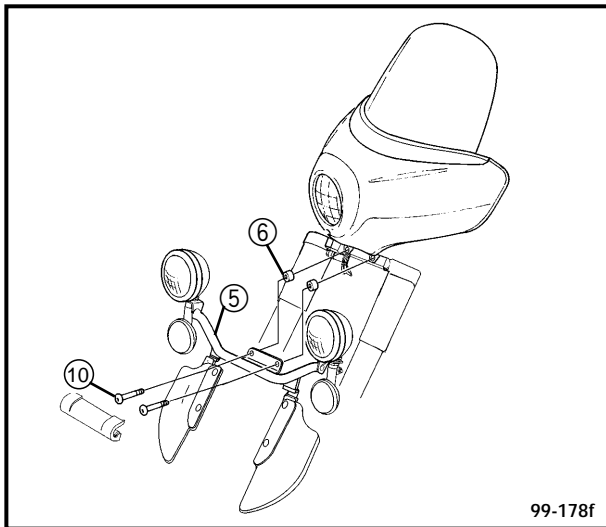
Passing Lamp Operation	Splice Red Power Lead To:
On at all times	Red w/Yellow stripe lead (in Natural nylon multi-connector)
On with High Beam only	Yellow lead to headlight (in Blue multi-connector)
On with Low Beam only	Green lead to headlight (in Blue multi-connector)

PASSING LAMP INSTALLATION (Cont'd.)

25. Lift the Passing Lamp Assembly into place, and install the mounting Bolts ⑩ with the Collars ⑥ between the Passing Lamp Mount ⑤ and the lower triple clamp. Tighten the Bolts ⑩ using a ball-end Allen wrench. Reinstall the chrome cover on the mount.

CAUTION:

Be careful not to pinch any of the turn signal or passing lamp wires between the passing lamp mount and the triple clamp.



26. Check the position of the Passing Lamps and Turn Signals. If necessary, remove the rings and Passing Lamp bulbs, then loosen the Special Bolts ⑨ and adjust the positioning. Tighten the Bolts and then reinstall the bulbs and rings.

OPERATION

The switch on the fairing next to the Auxiliary DC Terminal allows you to turn the lamps off if necessary. This should only be done when the motorcycle is parked. NEVER OPERATE THE PASSING LAMP SWITCH WHILE RIDING.

MAINTENANCE

Periodically check the bolts and screws for tightness. Also check the wires for any possible chaffing where they enter or exit the Passing Lamp Mount.

CARE AND CLEANING

Refer to your Owner's Manual.

CUSTOMER SERVICE

For more information regarding installation, please contact your Yamaha dealer.