

# Installation Instructions

## Air Filter Adapter Plate

### GYT-1S395-10-00

### YFM700R (Raptor 700)



Please read and understand these instructions completely before installation to avoid any possible injury to yourself or damage to your ATV and/or accessory.

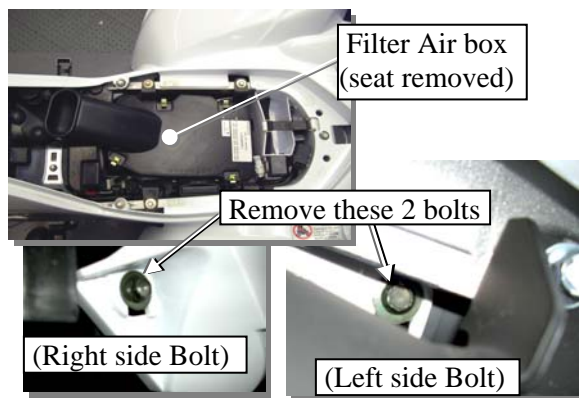
**Dealer:** These instructions contain important information for future reference and must be given to the customer.

#### 1. Parts List:

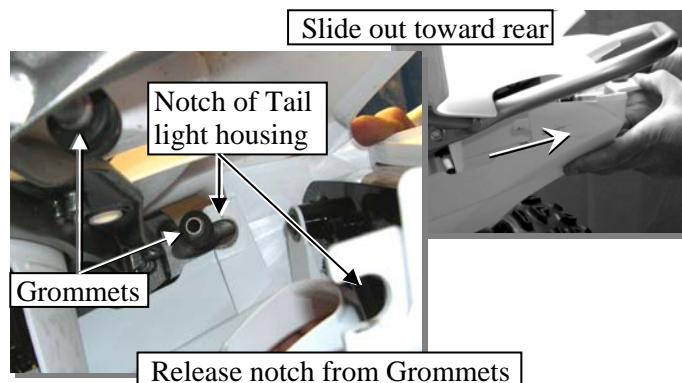
ITEM #	PART NAME	DESCRIPTION	QTY
1	Billet A/F Adapter Plate	Air Filter Adapter	1
2	Hardware Kit (p/n GYT-1S395-10-99)	Contains item listed in 2a & 2b	1
2a	Button Head Cap Screw	M6 x 1.0 x 10mm	4
2b	Washer, Plain (Small)	M6 x 1.5 Thick	4



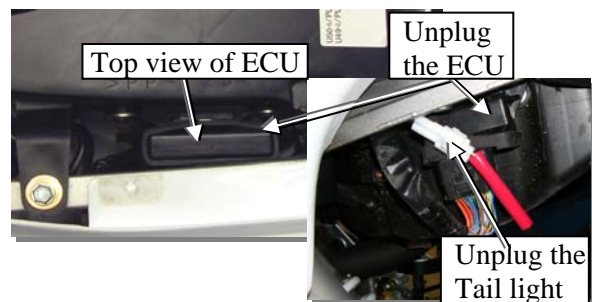
#### 2. Preparation: Wash the vehicle thoroughly before beginning installation.



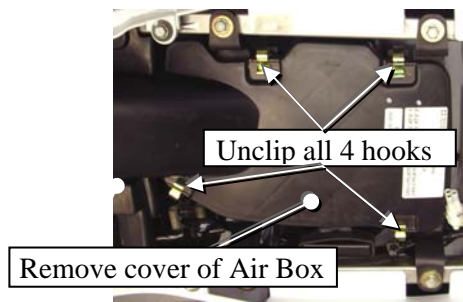
- a. Remove seat to access the Filter Air box.
- b. Remove Right & Left Side bolt from Rear Tail light housing to disconnect.



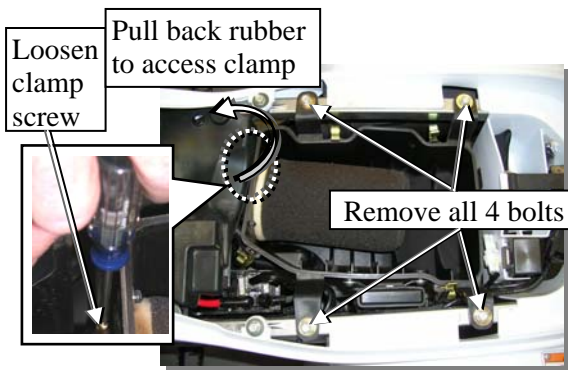
- c. Slide the Rear Tail light housing toward rear to disconnect and release from the Rubber grommet.



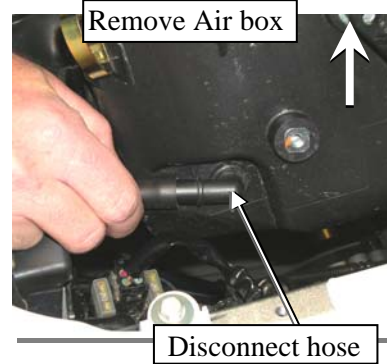
- d. Disconnect and unplug the Tail light & the ECU located on the left side of the Filter Air box.



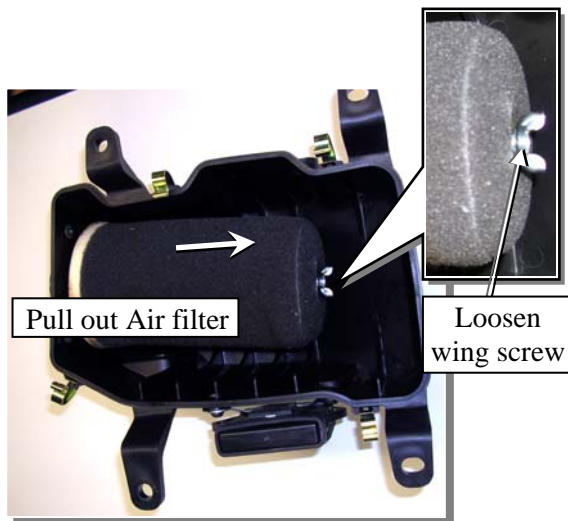
- e. Unclip the 4 spring hooks to remove the cover of the Air box.



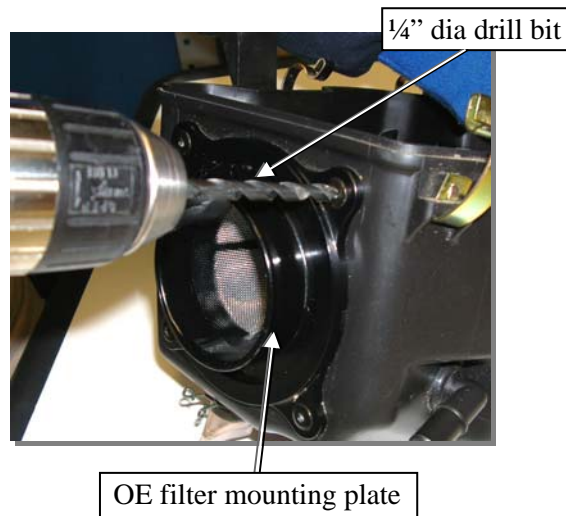
- f. Remove the 4 securing bolts of Air Box.
- g. Loosen the clamp which attaches the air filter case to the air filter case joints.



- h. Lift Air box partially out to access and disconnect the Crank case Breather hose from left side of Air box.
- i. Remove Air Box out from vehicle.



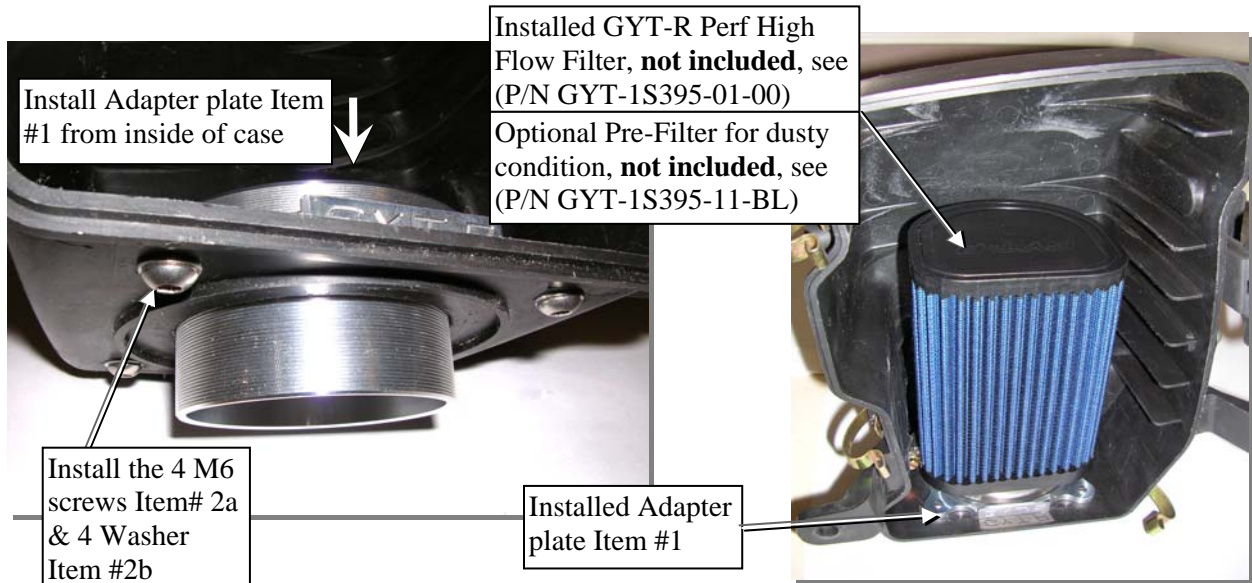
- i) Loosen the Winged head screw of the Air Filter until the Air Filter can be pulled out from Air box.



- j) Drill out the four rivets which hold the OE filter mounting plate in the air filter case utilizing a 1/4" diameter drill bit.
- k) Enlarge the four rivet holes in the case with the 1/4" drill bit.
- l) Remove the burrs from the drilled holes on the inside of the air filter case.
- m) Remove Air box Lid Clips (4x) and save with Lid if needed to reinstall lid.

### 3. Installation:

- a. Install your new GYT-R billet air filter adapter plate (Item# 1), apply clear Silicone Sealant to the mating surface between the Adapter plate & Case. Apply Loctite blue 242 Threadlocker to the threads, and screw in the supplied 4 button-head cap Screws (Item #2a) & Washers (Item #2b), torque the 4 screws to 6 Nm (4.5 ft-lbs).
- b. Wipe off excess silicone.



- c. Follow steps 2a – 2j in reverse order to complete installation.
- d. Allow silicone to dry.

### 4. Maintenance:

Periodically check torque on all hardware. If loose hardware is found, remove hardware, clean off old Loctite, re-apply fresh Loctite and re-torque to specification.

### 5. Customer Service:

For more information regarding installation please contact your YAMAHA dealer.